

Insulation

Great Britain & Ireland

Seventh Issue | 07/2025

# K-Roc® Rainscreen Slab

Insulation for use behind rainscreen façades, including steel and timber frame systems with a masonry outer leaf



---

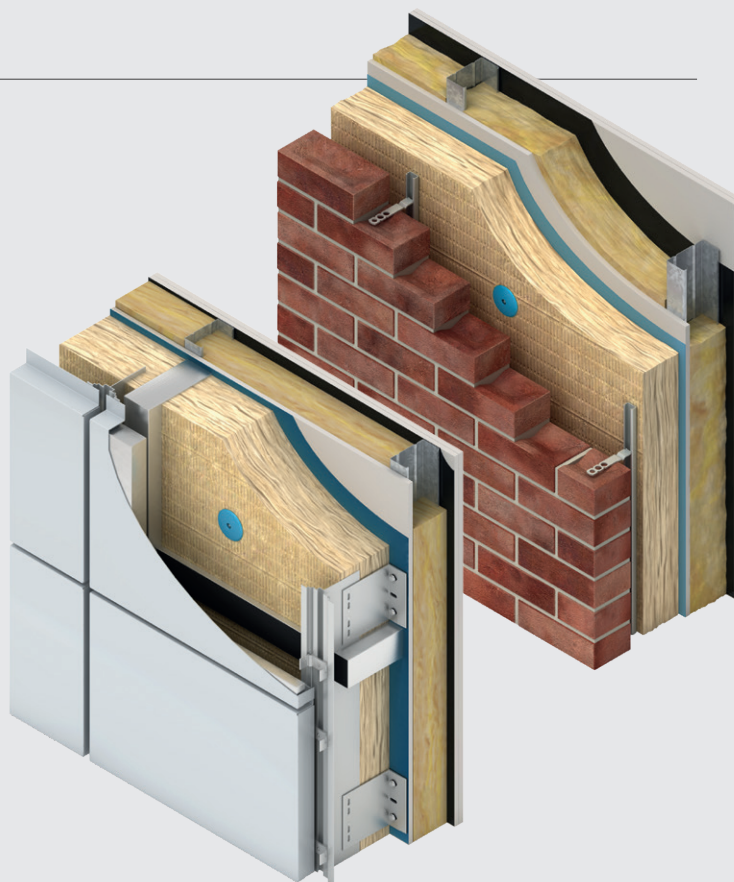
# Contents

---

<b>Introduction</b>	<b>1</b>
<b>Product details</b>	<b>2</b>
The product	2
Standards & approvals	2
Standard dimensions	2
Moisture properties	2
Density	2
Thermal properties	2
Fire performance	3
<b>Typical constructions</b>	<b>4</b>
Kingspan K-Roc® Rainscreen Slab for rainscreen applications	4
Kingspan K-Roc® Rainscreen Slab for steel frame systems	5
<b>Design considerations</b>	<b>6</b>
Linear thermal bridging at junctions and point thermal bridging	6
Responsible sourcing	8
Specification clause	8
Product classifications	8
Fire safety	8
Fire stop & cavity barrier strategy	8
Water vapour control / condensation	8
Wind loading	8
<b>Sitework</b>	<b>9</b>
Installation	9
General	10
<b>About Kingspan Insulation</b>	<b>11</b>
Products & solutions	11
Company details	15
Services	15
Planet Passionate	16

# Introduction

- Rock mineral fibre insulation with a thermal conductivity of 0.034 W/mK
- A1 Euroclass
- Successfully tested in a façade system to BS 8414-2: 2015 + A1: 2017 in accordance with the performance criteria set out in BR 135



## Useful links

### Website

[Great Britain - Kingspan K-Roc® Rainscreen Slab webpage](#)

[Ireland - Kingspan K-Roc Rainscreen Slab webpage](#)

### Certification

[Kingspan K-Roc® Rainscreen Slab Certificate of Constancy of Performance \(Eurofins\)](#)

[Kingspan K-Roc® Rainscreen Slab Certificate of Constancy of Performance \(BBA\)](#)

### Declaration of Performance (DoP)

[Kingspan K-Roc® Rainscreen Slab Declaration of Performance \(CPR\)](#)

[Kingspan K-Roc® Rainscreen Slab Declaration of Performance \(UKDoP\)](#)

### Test reports / classification

[Kingspan K-Roc® BS EN 13641-1: 2015 test report \(EUI-21-B-000335-A Revision 1\)](#)

[Kingspan K-Roc® BS EN 1364-1: 2015 test report \(EUI-21-B-000335-B\)](#)

[Kingspan K-Roc® BS EN 13501-2: 2016 classification report](#)

### Safety information

[Kingspan K-Roc® product safety information](#)

# Product details

## The product

Kingspan K-Roc® Rainscreen Slab is a rock mineral fibre insulation.

## Standards & approvals

Kingspan K-Roc® Rainscreen Slab is manufactured to the highest standards under a management system certified to ISO 9001: 2015 (Quality management systems) and ISO 14001: 2015 (Environmental management systems).

The use of Kingspan K-Roc® Rainscreen Slab (in thicknesses of 30 - 200 mm) is covered by BBA Certificate 20/5845.



## Standard dimensions

Kingspan K-Roc® Rainscreen Slab is available in the following standard size(s):

Nominal dimension		Availability
Length	(mm)	1200
Width	(mm)	600
Insulant thickness	(mm)	Refer to local distributor or Kingspan Insulation price list for current stock and non-stock sizes.

## Moisture properties

Kingspan K-Roc® Rainscreen Slab typically achieves a water vapour resistivity of 5 MNs/gm and a water vapour diffusion resistance factor of 1 MU,  $\mu$  in accordance with BS EN 12086: 2013 (Thermal insulating products for building applications. Determination of water vapour transmission properties).

Kingspan K-Roc® Rainscreen Slab typically achieves a water absorption (short term) of  $\leq 1$  kg/m<sup>2</sup> when tested to BS EN ISO 29767: 2019 (Thermal insulating products for building applications. Determination of short term water absorption by partial immersion).

Kingspan K-Roc® Rainscreen Slab typically achieves a water absorption (long term) of  $\leq 3$  kg/m<sup>2</sup> when tested to EN 12087: 2013 (Thermal insulating products for building applications. Determination of long term water absorption by immersion).

## Density

Kingspan K-Roc® Rainscreen Slab has a density of 45 kg/m<sup>3</sup>.

## Thermal properties

The  $\lambda$ -values and R-values detailed below are quoted in accordance with BS EN 13162: 2012 + A1: 2015 (Thermal insulation products for buildings. Factory made mineral wool (MW) products. Specification).

### Thermal conductivity

The slabs achieve a thermal conductivity ( $\lambda$ -value) of: 0.034 W/mK.

### Thermal resistance

Thermal resistance (R-value) varies with thickness and is calculated by dividing the thickness of the slab (expressed in metres) by its thermal conductivity. The resulting number is rounded down to the nearest 0.05 (m<sup>2</sup>K/W).

Insulant thickness (mm)	Thermal resistance (m <sup>2</sup> K/W)
30	0.85
50	1.45
60	1.75
75	2.20
80	2.35
90	2.60
100	2.90
110	3.20
120	3.50
125	3.65
130	3.80
140	4.10
150	4.40
160	4.70
180	5.25
200	5.85

NB Refer to local distributor or Kingspan Insulation price list for current stock and non-stock sizes.

# Product details

## Fire performance

Under System 1 AVCP, Kingspan K-Roc® Rainscreen slab achieves European Classification (Euroclass) A1 when classified to EN 13501-1: 2018 (Fire classification of construction products and building elements - Classification using data from reaction to fire tests). The EU Certificate of Constancy of Performance (certificate number 0809 - CPR - 19000635) and UK Certificate of Constancy of Performance (certificate number UK 0836-CPR-22/P6091) are available to download on the [website](#).

Kingspan K-Roc® Rainscreen Slab in the constructions specified in the table below, when subjected to BS EN 1364-1: 2015 (Fire resistance tests for non-loadbearing elements – Walls) achieved the results shown.

Test	BS EN 1364-1: 2015	
Build-up	1*	2**
Report no.	EUI-21-B-000335-A - Revision 1	EUI-21-B-000335-B
Issue date	27 October 2023	21 April 2022
Direction	Inside to outside	Outside to inside
Integrity (mins.)	112	132

When classified under BS EN 13501-2: 2016 (Fire classification of construction products and buildings elements- Classification using data from fire resistance tests, excluding ventilation services), Kingspan K-Roc® Rainscreen Slab, in the constructions specified below, has achieved the fire classifications shown.

Classification	BS EN 13501-2: 2016	
Build-up	1*	2**
Report no.	EUI-21-000335	
Issue date	9 May 2022	
Direction	Inside to outside	Outside to inside
Integrity (mins.)	EI 90	EI 120

\* Build-up 1 - 2 x 15 mm layers of Fireline plasterboard, VCL, 100 mm **Kingspan K-Roc® Framing Slab** between metal studs @600tc (Kingspan Steel Framing System), 12 mm Y-wall sheathing board, Kingspan nilvent® and 100 mm **Kingspan K-Roc® Rainscreen Slab**.

\*\*Build-up 2 - 100 mm **Kingspan K-Roc® Rainscreen Slab**, Kingspan nilvent®, 12 mm Y-wall sheathing board, 100 mm **Kingspan K-Roc® Framing Slab** between metal studs @600tc (Kingspan Steel Framing System), VCL and 2 x 15 mm layers of Fireline plasterboard.

Kingspan K-Roc® in a specific construction (see Figure 4 below) has been successfully tested to BS 8414-2: 2015 + A1: 2017 (Fire performance of external cladding systems - Test method for non-loadbearing external cladding systems fixed to and supported by a structural steel frame), in accordance with the performance criteria set out in BR 135 (Fire performance of external thermal insulation for walls of multi-storey buildings).

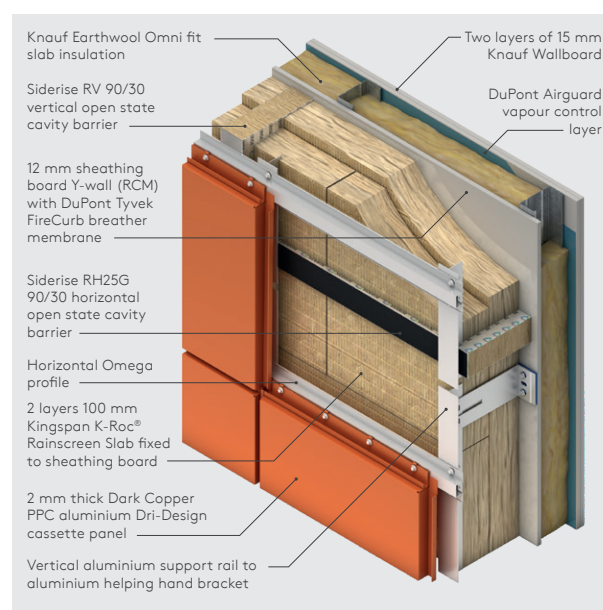


Figure 4 - Aluminium Dri-Design cassette & SFS

The test report detailing the construction is available for download on [our website](#) or further information can be provided by emailing [highrisetechnical@kingspan.com](mailto:highrisetechnical@kingspan.com).

For guidance regarding the routes to compliance for meeting the fire safety requirements of the Building Regulations / Standards in Great Britain, refer to the relevant Technical Bulletins and links to Government websites at [www.kingspaninsulation.co.uk/fireregulations](http://www.kingspaninsulation.co.uk/fireregulations) (for GB) or contact technical services at [technical@kingspaninsulation.ie](mailto:technical@kingspaninsulation.ie) (for Ireland).



For information on the field of application of these test reports please [click here](#).

# Typical constructions

## Kingspan K-Roc® Rainscreen Slab for rainscreen applications

Rainscreen façade systems are proprietary, resulting in a wide variation of possible system build-ups, material combinations and mechanisms that are used to fix and support the external cladding to the wall structure.

Fixings and supports penetrating the insulation through to the structure form point thermal bridges. The effect on the thermal performance of the overall façade system can be significant. Whilst the use of thermal isolators can assist in mitigating the impact of thermal bridging, the type and placement of fixings and supports can exacerbate heat flow through the façade assembly affecting the U-value.

For these reasons, it is advised that the Kingspan Insulation Technical Service Department is contacted for specific U-value calculations (see rear cover for details).

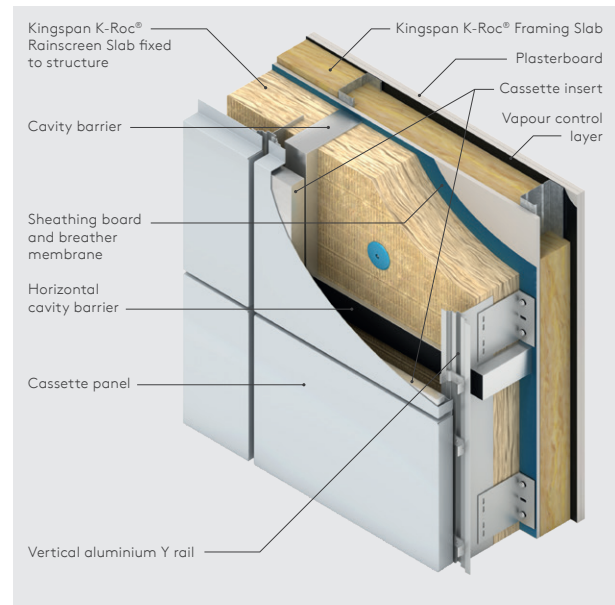


Figure 1 - Aluminium cassette & SFS

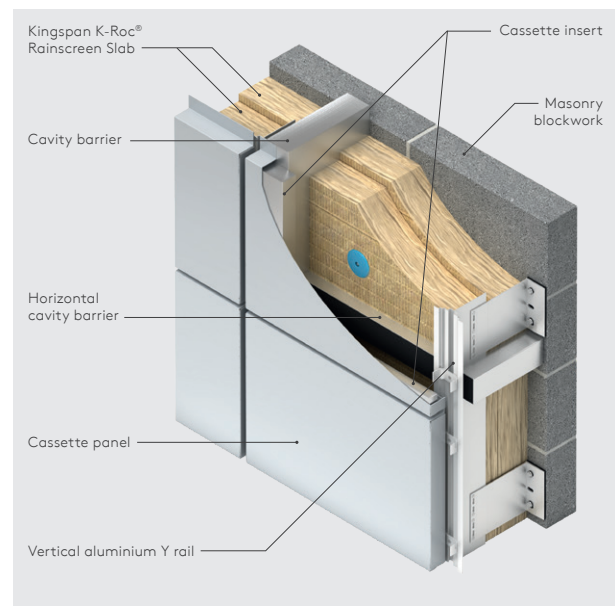


Figure 2 - Aluminium cassette & masonry blockwork

---

# Typical constructions

---

## Kingspan K-Roc® Rainscreen Slab for steel frame systems

It is advised that the Kingspan Insulation Technical Service Department is contacted for specific U-value calculations (see rear cover for details).

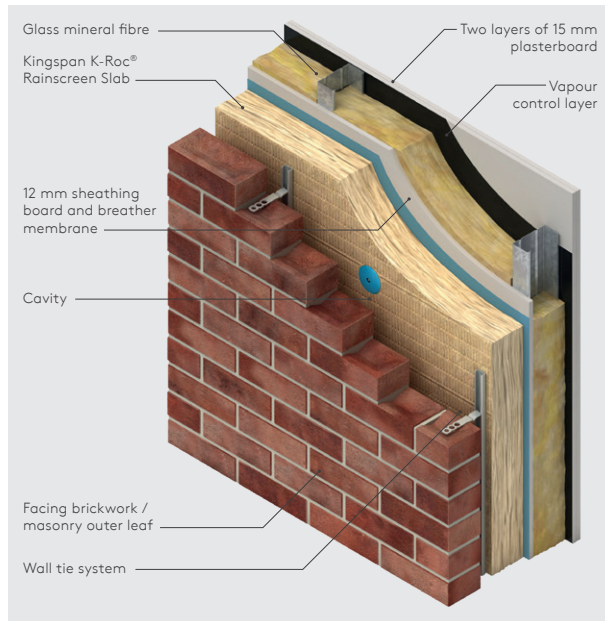


Figure 3 - Masonry brickwork & SFS

---

# Design considerations

---

## Linear thermal bridging at junctions and point thermal bridging

### Basic principles

Linear thermal bridging describes the heat loss / gain that occurs at junctions between elements e.g. where an external wall meets the roof, or at junctions around openings in the building fabric where the thermal insulation layer is discontinuous e.g. sills, jambs and lintels.

Interruptions within the insulation layer by materials with poorer insulating properties can result in a thermal bridge, which in turn can lead to problems of condensation and mould growth, especially if there is a drop in surface temperature.

The heat flow at these junctions and opening locations, over and above that through the adjoining plane elements, is the linear thermal transmittance of the thermal bridge: measured in  $W/mK$ ; referred to as a 'psi-value'; and expressed as a ' $\psi$ -value'.

The lower the  $\psi$ -value, the better the performance,  $\psi$ -values are taken into account in the calculation methodologies e.g. the Standard Assessment Procedure (SAP) that are used to assess the operational  $CO_2$  emissions and, where applicable, the fabric energy efficiency of new buildings.

$\psi$ -values can comprise either, or a combination of, approved, calculated or assumed values.

Existing building junction losses are not typically accounted for in whole building heat loss calculations and only the risks of surface condensation and mould growth are considered.

Point thermal bridging describes the heat loss associated with penetrating an insulation layer at discrete points. Point thermal bridging is typically used as an adjustment to a U-value for an element, taking account of the number of brackets, fixings or fasteners ( $n$ ) and their associated point thermal losses; these losses are measured in  $W/mK$ ; referred to as a ' $\chi$ -values'; and expressed as a ' $\chi$ -values'.

The U-value of a rainscreen wall is adjusted to account for point thermal bridging by adding an adjustment to the U-value based on the number of penetrations per square metre of wall ( $n$ ) multiplied by the calculated point thermal transmittance ( $\chi$ ) for brackets penetrating the insulation layer. The  $\chi$ -value can be determined through 3-Dimensional numerical calculation as described in BS EN ISO 10211: 2017 / I.S. EN ISO 10211: 2017 (Thermal bridges in building construction. Heat flows and surface temperatures. Detailed calculations).

## Reducing linear & point thermal bridging

Heat typically flows through the easiest path. For a wall insulated with Kingspan K-Roc® Rainscreen Slab, the main linear thermal bridges are the reveals, exposed slab edges and balconies, the junctions between the walls and the roof and where the external wall and ground floor meet. In addition, point linear transmittance will occur through the rainscreen fixing system chosen, where the rainscreen supports penetrate the insulation layer.

Whilst there are some 'approved' details available for insulation installed to the outer face of the construction, these are largely targeted at new build constructions. However, where applicable, they are also considered good practice for refurbishment.

Continuity of insulation is the best approach to limiting losses from junctions or from losses associated with fixing the rainscreen façade. If continuity is not achievable, overlap of insulation layers and use of lower conductivity materials represents a good practice approach. Where neither option is possible, the risk of condensation will require particular consideration in determining an appropriate approach. Details and designs should be considered in the context of the building, its construction, characteristics, condition and ventilation provisions.

Detailing at junctions to minimise the effects of linear thermal bridging and the associated risk of condensation or mould growth is important and there are some simple design considerations that can be adopted when insulating to help mitigate the risks and to reduce heat loss.

- The reveal linear thermal bridge can be avoided either by positioning the window frame so that it overlaps the insulated cavity barrier, or if this is not possible, the linear thermal bridge can be reduced by insulating the reveal at jambs, head and sill. Where existing windows or doors are not replaced as part of renovation works, design and detailing of the rainscreen façade should consider the potential for future window replacement works.
- One of the largest thermal bridging losses for buildings is the heat lost through junctions between balconies and the external wall / intermediate floor. Good practice for new buildings is to isolate the external balcony from the building structure, using an appropriate thermal break, combined with consideration of the reinforcement material used to connect the balcony back to the main structure (e.g. stainless steel has a much lower thermal conductivity than mild steel).

---

# Design considerations

---

- For existing buildings, the option to use an appropriate thermal break may not be available and the effect of heat loss from balconies through the external rainscreen façade needs careful consideration. Wrapping the external balcony in appropriate insulation can assist in this circumstance to reduce the effects of heat lost through this junction.
- For a new build construction, where Kingspan K-Roc® Rainscreen Slab is used to sheath a frame construction at the edge of ground floors, the distance between the top surface of the floor insulation or perimeter insulation upstand, and the bottom of the wall insulation must be a minimum of 150 mm for a concrete floor (for the UK) and 225 mm (for the Republic of Ireland). For a suspended timber floor, the distance must be a minimum of 200 mm. The further appropriate wall insulation extends past the floor insulation, the better the thermal performance of the junction between the wall and the floor.
- For existing building's junctions between walls and ground floor, good practice wherever possible is to extend an appropriate insulation (for example rock mineral fibre) below ground level, so that wall and floor insulation layers overlap. Best practice would be to excavate and extend appropriate external insulation below ground level (ideally by at least 300 mm below finished floor level) to reduce the heat flow path and therefore reduce junction losses.
- Where the rainscreen system is used at roof level as part of a parapet detail, insulation continuity should be maintained using an appropriate insulated upstand to reduce cold bridging. An upstand with a minimum resistance of 1.14 m<sup>2</sup>K/W is required around the perimeter of the roof on the internal façade of parapets. The upstand should extend a minimum of 150 mm above the roof insulation and achieve a minimum distance of 300 mm between the top of the insulation upstand and the bottom of the horizontal roof insulation. Insulation should be carried up into parapets at least as high as the flat roof insulation upstand.

Where Insulating as part of a rainscreen system, there are also some simple design considerations that can be adopted to reduce point thermal transmittance.

- Point thermal bridges cause increased flow of heat and should be taken into consideration when designing a façade / façade system. The first priority should be to eliminate continuous conductive elements and instead use discontinuous supports to make required connections back to structure. When the thermal bridge is a necessity, such as when the structure must penetrate uninterrupted through the insulation, look for materials with the lowest possible thermal conductivity or that allow for a reduction in the amount that the insulation layer is bridged. Thermal decoupling of the substructure from the ventilated façade can be achieved through thermal separation layers. The use of a neoprene / isolator pad, between the 'helping hand' bracket and the structure, can help to mitigate the effects of cold bridging.
- Support system suppliers should be able to calculate the thermal value of their brackets and isolators, and ensure that the installation minimises the overall impact of thermal bridging. However, in most instances a detailed three-dimensional U-value is required to assess the impact of the chosen design on the framing system.

For further advice on reducing linear and point thermal bridging, please consult Kingspan Insulation's Technical Service Department (see rear cover for details).

---

# Design considerations

---

## Responsible sourcing

Kingspan K-Roc® Rainscreen Slab is certified to BES 6001 (Framework Standard for the Responsible Sourcing of Construction Products) 'Pass'.



Kingspan K-Roc® Rainscreen Slab is manufactured under a management system certified to ISO 14001: 2015 (Environmental management systems).

NB The above information is correct at the time of writing. Please contact the Kingspan Insulation Technical Service team (see rear cover for details) for copies of certificates.

## Specification clause

Kingspan K-Roc® Rainscreen Slab should be described in specifications as:

The wall insulation shall be Kingspan K-Roc® Rainscreen Slab \_\_\_\_\_ mm thick: comprising a rock mineral fibre insulation. The product shall be manufactured under a management system certified to ISO 9001: 2015 (Quality management systems) and ISO 14001: 2015 (Environmental management systems) and installed in accordance with the instructions issued by Kingspan Insulation Limited.

## Product classifications

Uniclass UK

Pr\_25\_57\_06\_50 Mineral fibre slab insulation

CAWS

H92/776 Thermal insulation

Details also available on **NBS Source**.

## Fire safety

For guidance regarding the routes to compliance for meeting the fire safety requirements of the Building Regulations / Standards in Great Britain, refer to [www.kingspaninsulation.co.uk/fireregulations](http://www.kingspaninsulation.co.uk/fireregulations) (for GB) or contact technical services at [technical@kingspaninsulation.ie](mailto:technical@kingspaninsulation.ie) (for Ireland).

## Fire stop & cavity barrier strategy

Current guidance to the Building Regulations / Standards should be considered with regard to the performance requirements for, and the provision of fire stops and cavity barriers.

## Water vapour control / condensation

Consideration should be given to the risk of condensation, when designing thermal elements.

A condensation risk analysis should be carried out following the procedures set out in BS EN ISO 13788: 2012 / I.S. EN ISO 13788: 2012 (Hygrothermal performance of building components and building elements. Internal surface temperature to avoid critical surface humidity and interstitial condensation. Calculation methods). The Kingspan Insulation Technical Service Department (see rear cover for details) can provide this service.

## Wind loading

Kingspan K-Roc® Rainscreen Slab has been tested to BRE digest 346: 1989 (The assessment of wind loads. Part 7: wind speeds for serviceability and fatigue assessments), withstanding the applied dynamic wind loading at a maximum design pressure of 3.6 kPa, or 100 mph (44m/s) and assessed in accordance with BS EN 1991-1-4: 2005 + A1: 2010 (Eurocode 1. Actions on structures - General actions - Wind actions) / I.S. EN 1991-1-4: 2005 (Eurocode 1: Actions on structures - Part 1-4: General actions - Wind actions (including Irish National Annex)) taking into account:

- length / width / height of the building;
- orientation of the building;
- wind speed;
- aspect (e.g. on a hill side); and
- topographical value of the surrounding area.

# Sitework

## Installation

The installation guidance for Kingspan K-Roc® Rainscreen Slab outlined in this section must only be followed after considering the below.

To ensure compliance with the latest Building Regulations / Standards please consult your system supplier, the current guidance to the Building Regulations / Standards or Local Building Control for more information.

In England and Wales, for 'relevant' buildings over 18 m in height, membranes used as part of the external wall construction above ground level should achieve a minimum of Euroclass B-s3,d0.

Since rainscreen façade systems are proprietary and use differing mechanisms to fix and support the external cladding to the wall structure, installation guidance should be sought from the system manufacturer or supplier.

Nevertheless, in the absence of any other guidance the instructions set out below may be followed.

- Insulation slabs should be installed break-bonded with slab edges lightly butted and in such a manner to achieve a close fit between the slab and substrate interface so as to avoid gaps behind or between the slabs.
- Slabs should be cut neatly around fixings and brackets, so as to avoid gaps.
- The number and type of mechanical fixings required to fix Kingspan K-Roc® Rainscreen Slab will vary with the geographical location of the building, the local topography, the height and width of the wall concerned, the wall structure, and the type of mechanism being used to attach the cladding system.
- A minimum of 3 fixings per m<sup>2</sup> are required to secure the insulation slab to the wall structure. The centre fixing of each slab should be metal with metal spreader plate. The remaining 2 fixings and spreader plates can be plastic if required. Fixings should have a minimum head diameter of 70 mm.
- The requirement for additional fixings should be assessed in accordance with BS EN 1991-1-4: 2005 + A1: 2010 / I.S. EN 1991-1-4: 2005.
- Refer to the column opposite for fixing pattern.

- The fixings should be evenly distributed over the whole area of the slab.

Refer to:

**Ejot UK Limited** +44 (0) 1977 687 040  
[www.ejot.co.uk](http://www.ejot.co.uk)

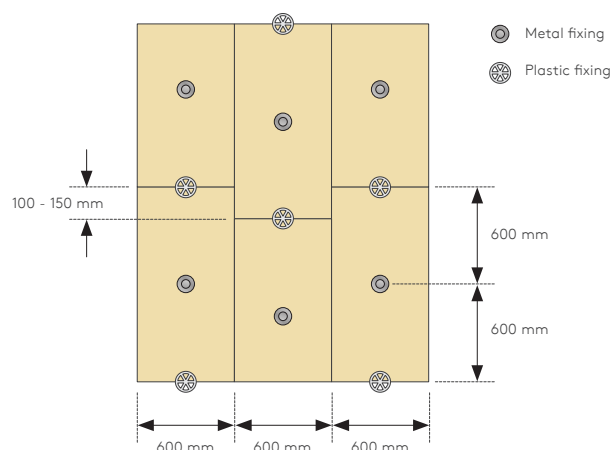
**SFS Intec** +44 (0) 3300 555 888  
[www.uk.sfs.com](http://www.uk.sfs.com)

- For brickwork cladding fixings, an approved restraint system should be used. For more information, please refer to:

**Ancon Ltd** +44 (0) 1142 755 224  
[www.ancon.co.uk](http://www.ancon.co.uk)

## Fixing pattern

- The image below shows the fixing pattern for the minimum number of fixings that should be used.



---

# Sitework

---

## General

### Cutting

- The use of dust masks is recommended, in accordance with CDM Guidelines, to prevent inhalation in the event loose fibres become airborne during the process of cutting.
- Cutting should be carried out using a hard steel bladed saw.
- Ensure accurate trimming to achieve close butting joints and continuity of insulation.

### Daily working practice

- At the completion of each day's work, or whenever work is interrupted for extended periods of time, slab edges and joints should be protected from inclement weather.
- Kingspan K-Roc® Rainscreen Slab should be left exposed for the shortest period of time possible during the construction phase. The installer and design team should assess whether additional protection may be required for the project. In the event that Kingspan K-Roc® Rainscreen Slab does become wet, slabs should be allowed to dry out as much as possible and then inspected before installation is finalised and any damaged panels replaced.

### Availability

- Kingspan K-Roc® Rainscreen Slab is available through specialist insulation distributors and selected builders' merchants throughout Great Britain and Ireland.

## Packaging & storage

- The polyethylene packaging of Kingspan Insulation products, which is recyclable, should not be considered adequate for outdoor protection.
- Ideally, slabs should be stored inside a building. If, however, outside storage cannot be avoided, then the slabs should be stacked clear of the ground and covered with an opaque polythene sheet or weatherproof tarpaulin. Slabs that have been allowed to get wet should not be used.

## Health & safety

- Kingspan Insulation products are chemically inert.
- A Safety Information Data Sheet for this product is available from the Kingspan Insulation website [www.kingspaninsulation.co.uk/safety](http://www.kingspaninsulation.co.uk/safety) or [www.kingspaninsulation.ie/safety](http://www.kingspaninsulation.ie/safety).

Warning - do not stand on or otherwise support your weight on this product unless it is fully supported by a load bearing surface.

---

# About Kingspan Insulation

---

## Products & solutions

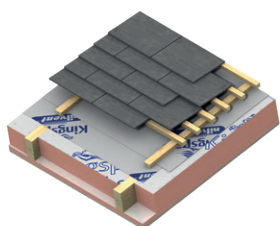
Rigid insulation products for building fabric applications, including roofs, walls and floors.

- Kingspan AlphaCore® – microporous silica-based insulation.
- Kingspan OPTIM-R® – vacuum insulation panel (VIP) systems.
- Kingspan Kooltherm® – phenolic insulation.
- Kingspan Therma™ – PIR insulation.
- Kingspan K-Roc® – rock mineral fibre insulation.
- Kingspan GreenGuard® – extruded polystyrene insulation (XPS).
- Kingspan TEK® – structural insulated panels (SIPs).
- Cavity closers – PVC-U extrusions with an insulation core.
- Membranes – for pitched roofs and walls.

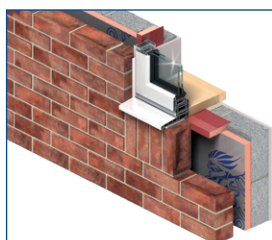


# About Kingspan Insulation

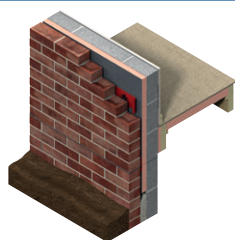
From new housing developments to refurbishing your home, we offer a number of different solutions for roof, wall and floor applications.



Insulation for tiled or slated pitched warm roof spaces



Insulated extrusions for closing wall cavities at openings



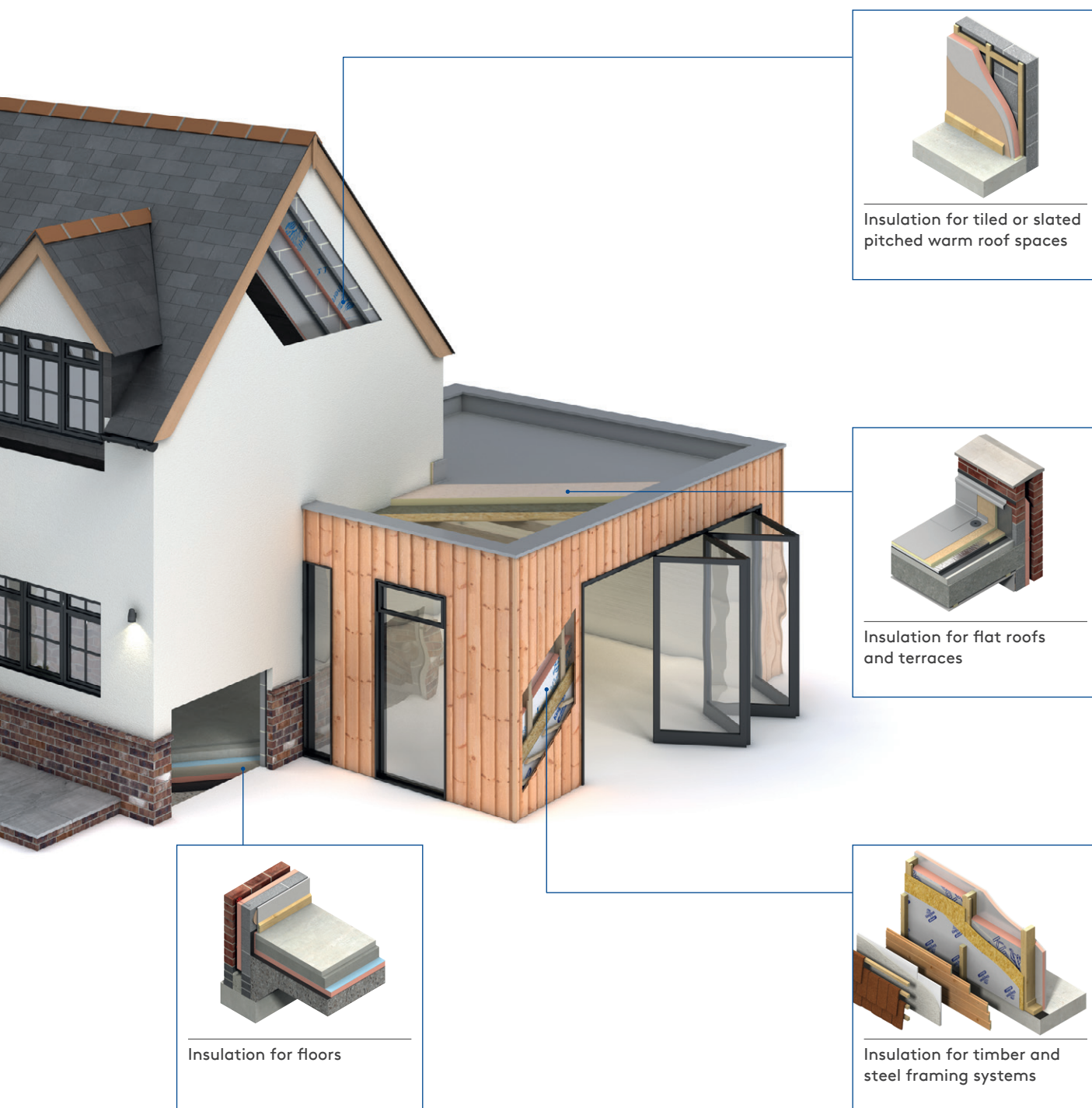
Full and partial fill cavity wall insulation



---

# About Kingspan Insulation

---

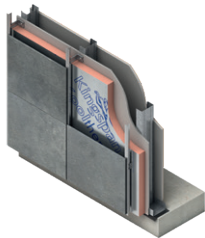
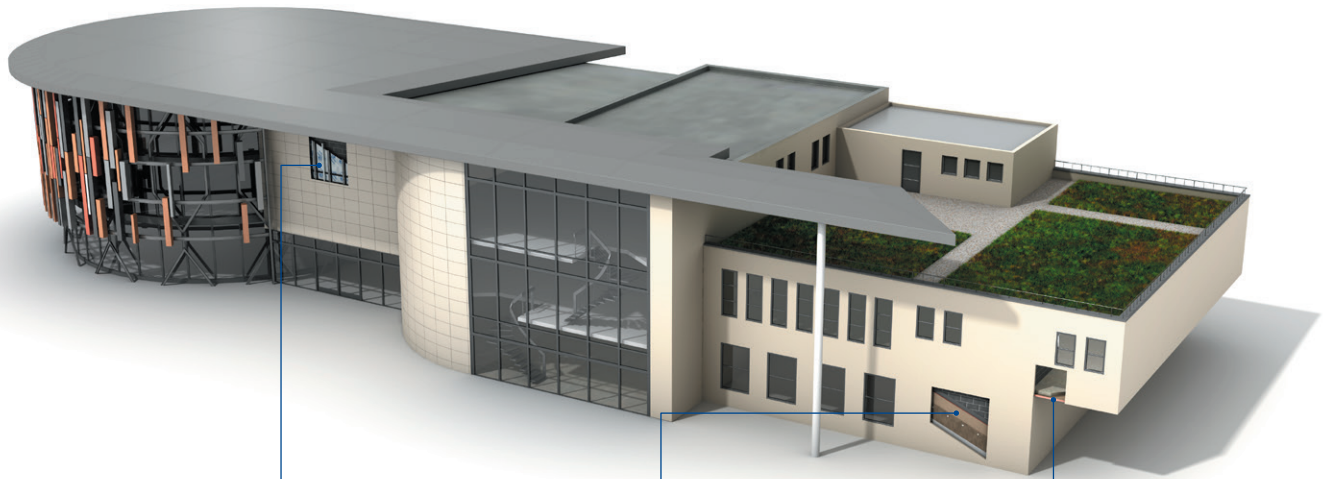


---

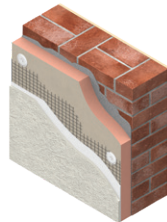
# About Kingspan Insulation

---

Solutions available for roofs, walls and floors of commercial buildings, from schools to retail.



Insulation for use behind rainscreen or masonry façade systems



External insulation for masonry walls



Insulation for structural ceilings (soffits)

# About Kingspan Insulation

## Company details

Kingspan Insulation Ltd is part of the Kingspan Group plc., one of Europe's leading construction product manufacturers. The Kingspan Group was formed in the late 1960s and is a publicly quoted group of companies headquartered in Kingscourt, County Cavan, Ireland.



Kingspan Insulation Ltd is a leading manufacturer of rigid insulation products and insulated systems for building fabric and building services applications.

Our GB head office is located in Pembridge, in the heart of rural Herefordshire. Our northern hub is near Selby in North Yorkshire. We also have a site in Castleblayney, Ireland. All three sites are accredited to the independent compliance standard ISO 37301: 2021.



## Services

Our support services provide fast and accurate advice no matter what your role is. Visit our website to access the following services.

- U-value calculations – free, quick and easy U-value calculations with our U-value Calculator.
- Help and advice on your projects, including stockists, how to guides, regulatory guidance and e-learning.
- Dedicated Specification and Sales teams to support projects.
- Building Information Modelling (BIM) – download BIM objects for our products.
- Tapered roofing service – Kingspan Insulation's tapered roofing systems come with a supporting design service to ensure the most cost-effective solution for a roof is identified.



- CPDs – Kingspan Insulation offers a number of free CPD seminars for architects and specifiers covering a wide range of industry topics. CPDs can be booked or a range of courses can be found online.
- Product awareness training – build your team's knowledge with on-site training and support with one of our experienced product technicians who cover the full range of Kingspan products and applications, from flooring to roofing and everything in-between with both internal and external wall insulations.





---

Planet Passionate is our group wide global sustainability programme.

Our Planet Passionate programme aims to have a positive impact on three big global challenges: climate change, circularity and protection of our natural world.



Scan for our latest progress report to learn more about our targets, partnerships and global commitments.

# Contact details

## Great Britain

Kingspan Insulation Ltd  
Pembroke | Leominster  
Herefordshire | HR6 9LA

T: +44 (0) 1544 388 601

E: [info@kingspaninsulation.co.uk](mailto:info@kingspaninsulation.co.uk)

[www.kingspaninsulation.co.uk](http://www.kingspaninsulation.co.uk)

For individual department contact details please visit  
[www.kingspaninsulation.co.uk/contact](http://www.kingspaninsulation.co.uk/contact)



Visit our free online U-value calculator.  
Offering free, quick and easy calculations  
for wall, floor and roof constructions.

## Ireland

Kingspan Insulation Ltd  
Castleblayney | County Monaghan

T: +353 (0) 42 979 5000

E: [info@kingspaninsulation.ie](mailto:info@kingspaninsulation.ie)

[www.kingspaninsulation.ie](http://www.kingspaninsulation.ie)

For individual department contact details please visit  
[www.kingspaninsulation.ie/contact](http://www.kingspaninsulation.ie/contact)



Visit our free online U-value calculator.  
Offering free, quick and easy calculations  
for wall, floor and roof constructions.



For the most up-to-date  
version of this brochure  
please scan or click [here](#).

To access pre-existing product information or information relating to previously sold/discontinued products please email [literature@kingspaninsulation.co.uk](mailto:literature@kingspaninsulation.co.uk).

The information contained in this brochure is believed to be correct at the date of publication. Kingspan Insulation Limited ("Kingspan Insulation") reserves the right to alter or amend the product specifications without notice due to continuous improvement commitments. There may also be relevant changes between publications with regard to legislation, or other developments affecting the accuracy of the information contained in this brochure. Product thicknesses shown in this document should not be taken as being available ex-stock and reference should be made to the current Kingspan Insulation price-list or advice sought from Kingspan Insulation's Customer Service Department. The information, technical details and fixing instructions etc. included in this literature are given in good faith and apply to uses described. Kingspan Insulation does not accept responsibility for issues arising from using products in applications different from those described within this brochure or failure to correctly follow the information or instructions as described within this brochure. Recommendations for use should be verified with a suitable expert or professional for suitability and compliance with actual requirements, specifications and any applicable laws and regulations. For other applications or conditions of use, Kingspan Insulation offers a technical advisory service (see above for contact details), the advice of which should be sought for uses of Kingspan Insulation products that are not specifically described herein. Please check that your copy of this literature is current by contacting the Kingspan Insulation Marketing Department.

© Kingspan, AlphaCore, K-Roc, Kingspan GreenGuard, Kooltherm, OPTIM-R, TEK and the Lion Device are Registered Trademarks of the Kingspan Group plc in the UK, Ireland and other countries. All rights reserved.

TM Therma is a Trademark of the Kingspan Group plc.

Kingspan Insulation Ltd is not associated with, and its products have not necessarily been tested by, the GREENGUARD Environmental Institute.

Registered in England & Wales, No. 01882722. Registered Office: Pembroke, Leominster, Herefordshire HR6 9LA UK. VAT GB428602456.

Registered in Ireland, No. 54621. Registered Office: Bree Industrial Estate, Castleblayney, Co. Monaghan, Ireland. VAT IE45750691.

